

LIBRARY LEVY INFORMATION MEETING

October 3, 2023



Library Leadership



Lisa Murray
Library Director
lmurray@cardlinc.org



Kelsey Wicker
Assistant Director
kwicker@cardlinc.org



David Keefer
Fiscal Officer
dkeefer@cardlinc.org

Library Board

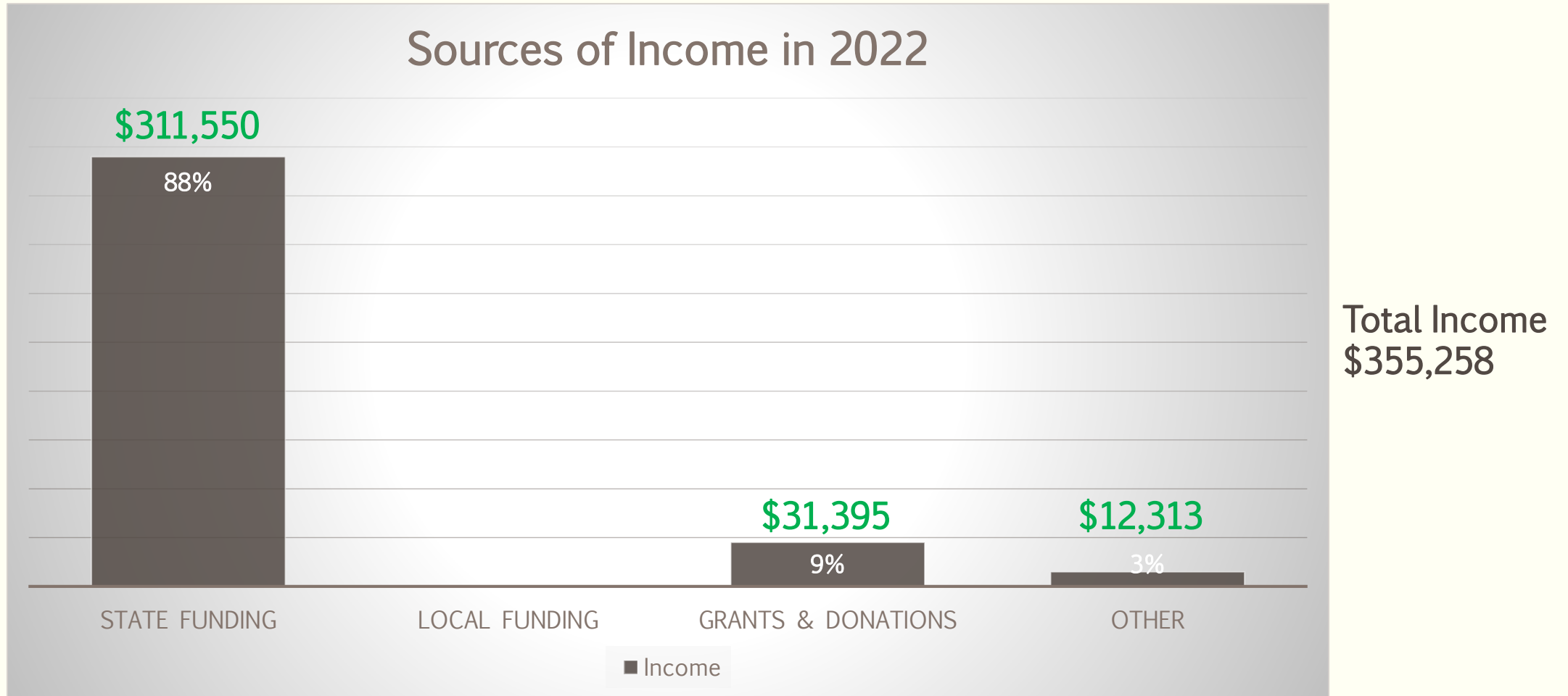
- Michelle Cope
- Alisa Harvey
- Monty Maceyko
- Nate Mosher
- Eleanor Roberts
- Dawn Ruehrmund
- Kathy Schelb

Agenda

- How is the library funded?
- How does the library use the funding?
- How does State funding impact the library?
- Why is a levy necessary?
- Why does it matter to the community?
- Q & A



How is the library funded?



How does the library use its budget to enrich our community?

Library Mission

We provide a safe and welcoming place to stimulate your imagination, express your creativity, and connect to the online world.



How does the library use its budget to enrich our community?



In Person

Visit the library
Monday through
Saturday



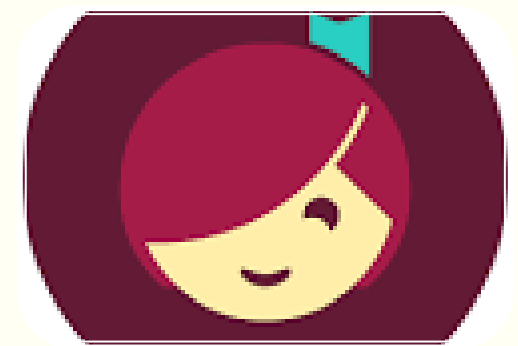
OPAC

Manage your
online account
from any device



cool-cat.org

545,564 books,
magazines, and
videos



Ohio Digital Library

690,804 digital
books and
magazines

How does the library use its budget to enrich our community?

- Friendly Helpful Staff
- Programs For All Ages
- Bicycle Lending
- Home & School Deliveries
- Technology & Job Search Assistance
- Research & Online Learning Tools
- Copy, Fax, Scan, Laminate
- Meeting Rooms
- Public Notaries
- Government and Legal Forms
- And So Much More



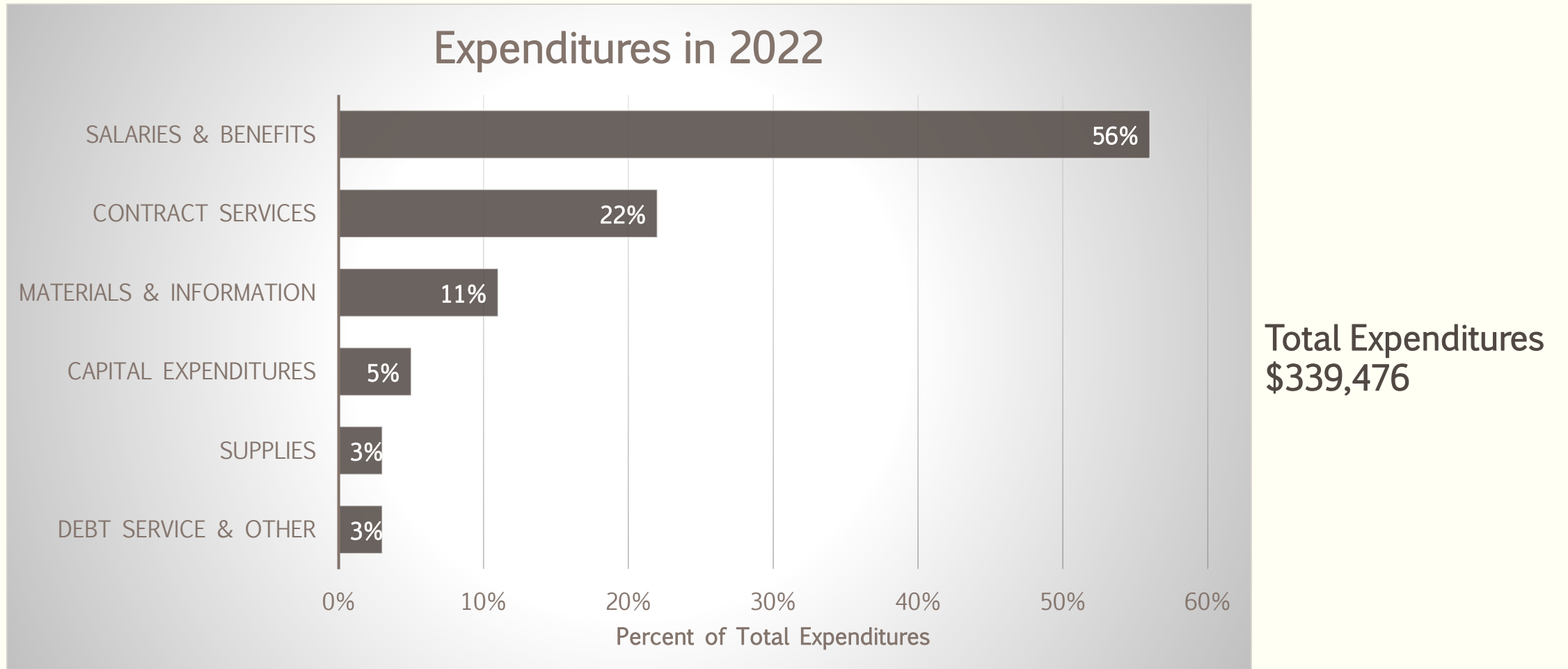
Internet computers
at the library

Wi-Fi availability
24/7 on library
property

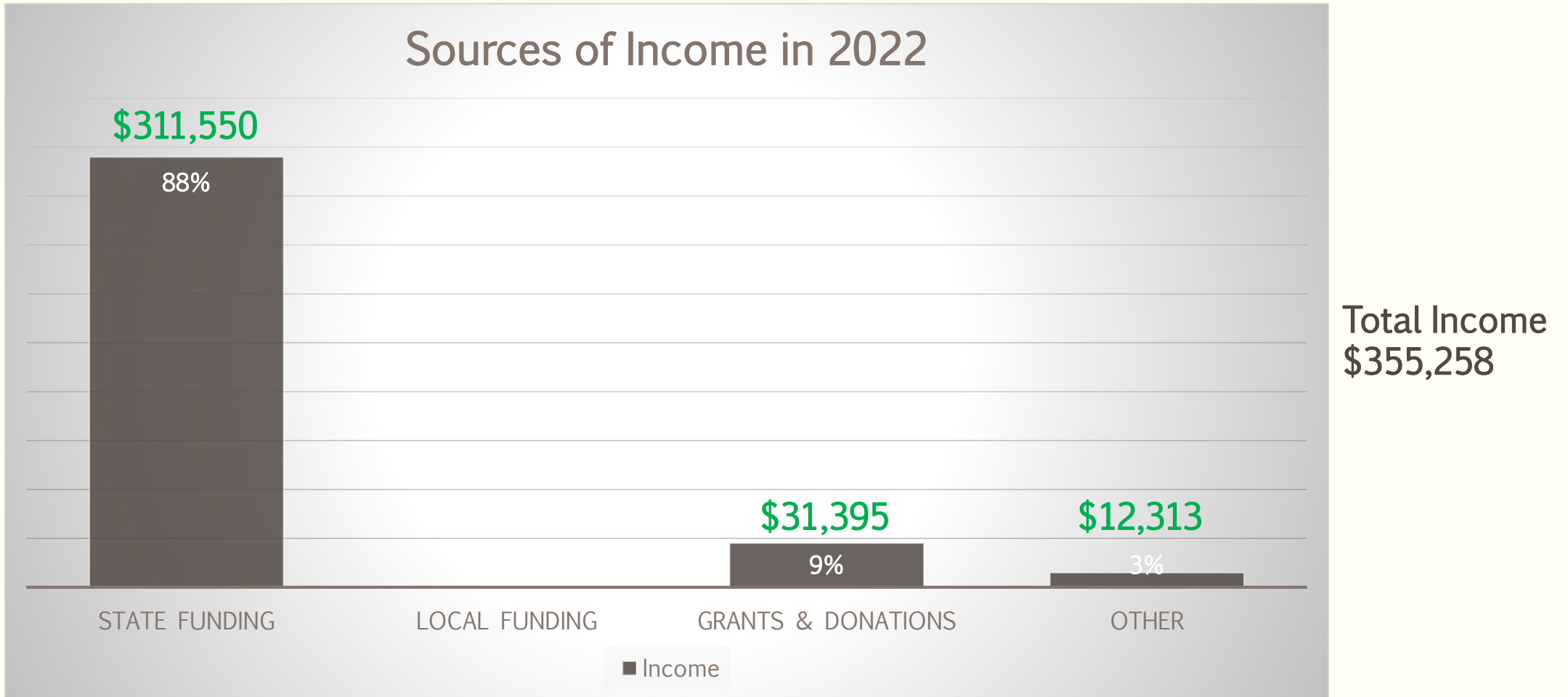


Wi-Fi at home with
hotspots and
tablets

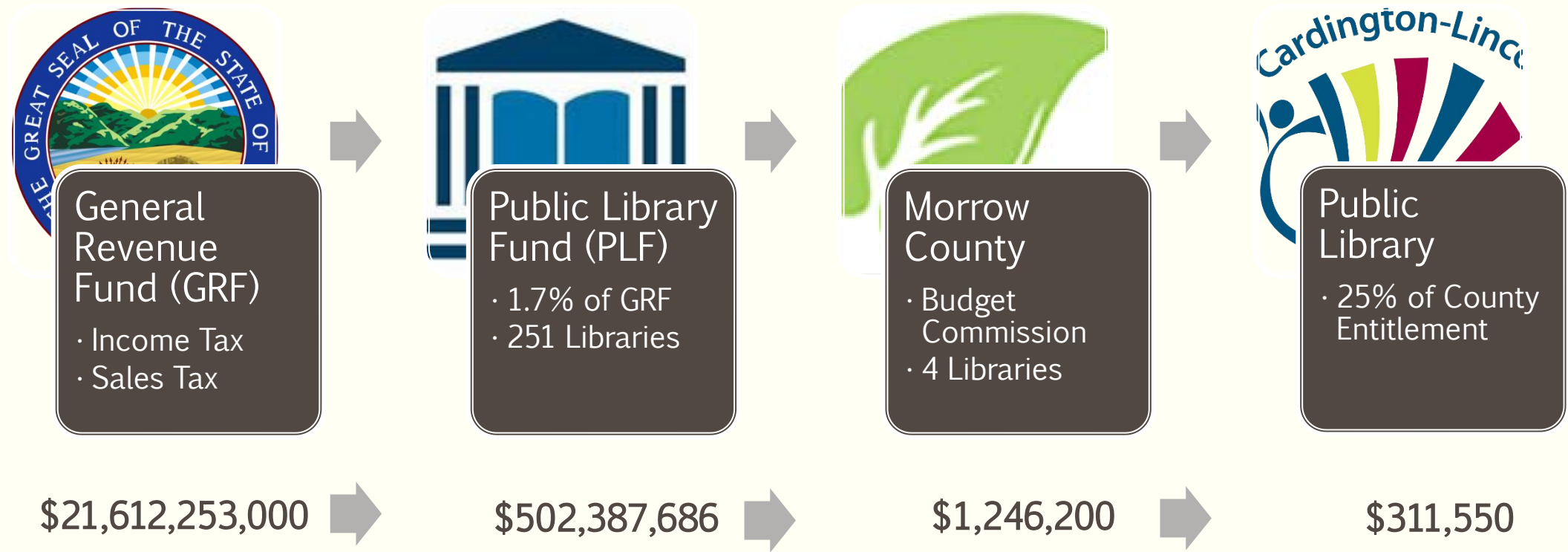
How are the library expenditures categorized?



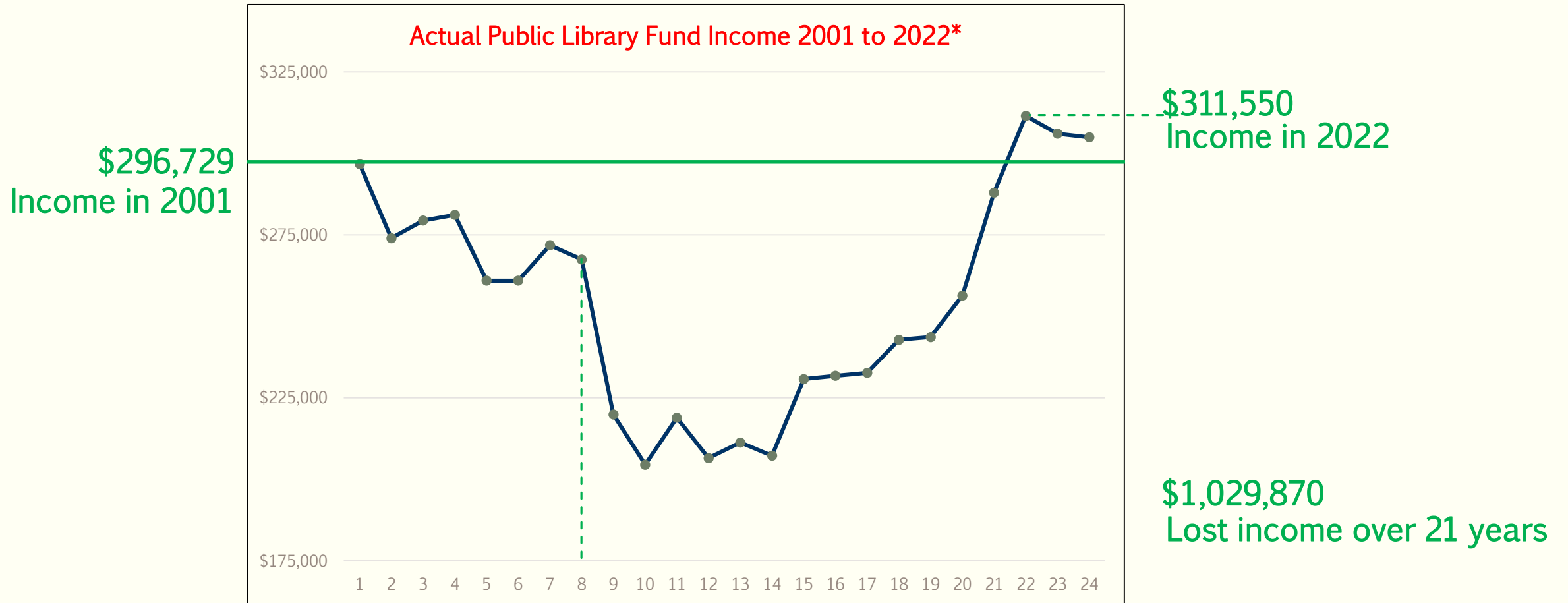
How is the library funded?



How does State funding get to the library?



What is the history of State funding for the library?



*Estimated Public Library Fund Income in 2023 and 2024

What is the impact of lower State funding over time?



Limited service hours prevents access for many patrons



State funding has not kept up with inflation

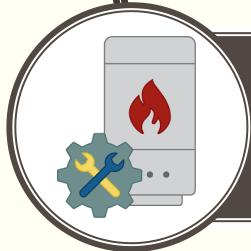


Pressures on wages from multiple sources

What is the impact of lower State funding over time?



Deferred maintenance increases repair costs



Aging mechanicals are failing

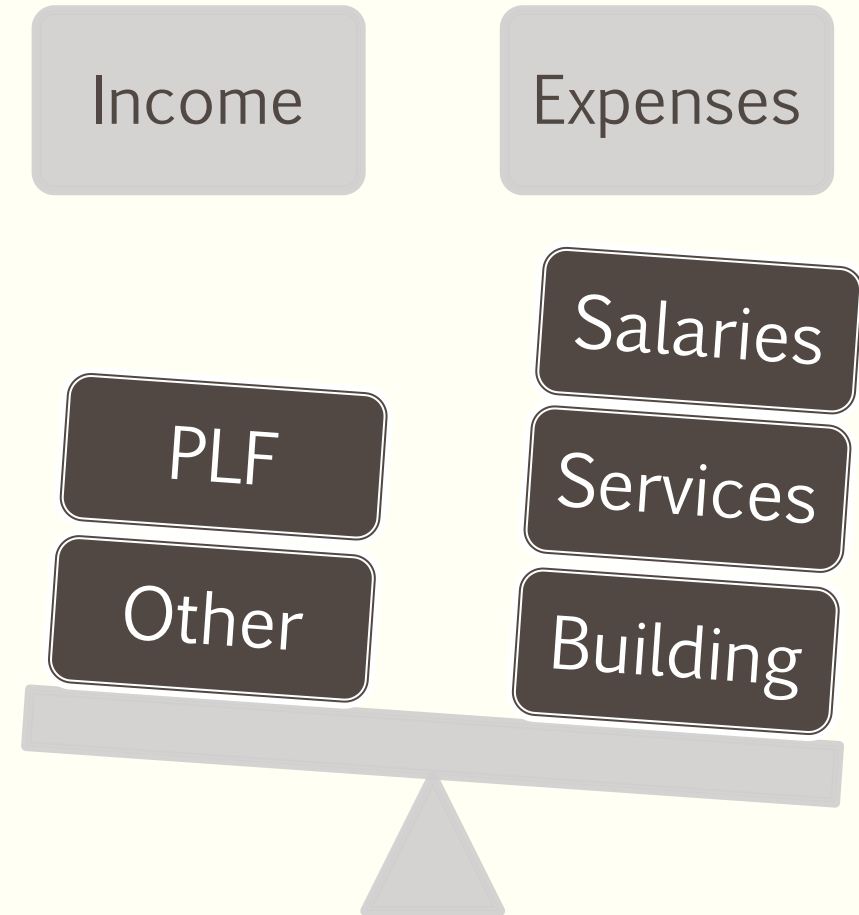


Building spaces are no longer configured properly

What is the financial position of the library?

At the current spending level:

- Deficit spending is here to stay
- Depleting reserves at a rapid rate
- Our savings account will be empty by the end of 2024



What will the library have to do to balance the budget?

Controllable Expenses:

- Library Hours
- Staff Hours
- Collection Budget
- Program Budget
- Preventative Maintenance
- Technology Replacement Schedule

Why is a levy necessary?

A local levy would ensure stable and sufficient resources for the next five years, allowing the library to meet the current and future needs of our community.



How much will it cost?

\$35 per year for every \$100,000 in assessed property value***

For the cost of just two hardback books, a household has access to 550,000 physical items, 690,000 digital items, public Wi-Fi 24/7, mobile hotspots for home use, public notaries, programs for all ages, story times, public meeting rooms, home deliveries, and much, much more.

****The property value that determines what homeowners will pay **IS NOT** based on the upcoming increase in Morrow County property taxes, it is based on prior assessed values.*

Why does the levy matter?

Levy funding would:

- Fill the gap, balance the budget, and create long term financial stability for our library.
- Give us the ability to create a replacement and maintenance schedule that will lower operating costs and keep our library running for decades to come.
- Allow us to continue to provide enriching and valuable programs and services for the community.



What will the library do if the levy passes?

Where we can go!



- Maintain a timely, current, and diverse collection of materials for all users.
- Adapt and enhance programs to meet the changing needs of the community.
- Continue partnerships with local schools and organizations to maximize effectiveness.
- Evaluate service models to ensure library resources are available when demand is the highest.
- Ensure library spaces are equipped with the technology and furnishings needed in a modern world.

Questions?



More Information

- yourlibrary@cardlinc.org
- <https://www.cardingtonlibrary.org>
- <https://www.facebook.com/cardingtonlibrary>
- <https://www.instagram.com/cardingtonlibrary>